

Accountable Care Organization (ACO) 2013 Quality Performance Report

Prepared For:
Regal Medical Group/Heritage CA ACO

P078

About this Report

Who	<ul style="list-style-type: none"> • CMS is providing this confidential Quality Performance Report to all Accountable Care Organizations participating in the Pioneer ACO Model during calendar year 2013.
What	<ul style="list-style-type: none"> • This report contains information on your ACO's performance rate on the 33 ACO quality measures for the 2013 reporting period. This report also contains summary statistics of the performance rates across all ACOs in the SSP and Pioneer ACO programs. • The report identifies your ACO's rate on each measure, regardless of whether or not your ACO fully and completely reported on that measure. We have done this to provide you with information you can use to improve your quality reporting efforts. • The report also identifies the percent of measures in each domain where your ACO achieved minimum attainment. Failure to reach minimum attainment at least one measure in a domain will result in a domain score of zero and an overall quality score of zero. • This report also provides graphs for each ACO showing their performance on each measure in PY1 and PY2.
Why	<ul style="list-style-type: none"> • This report enables you to identify areas for improvement in the next reporting period.
What's Next	<ul style="list-style-type: none"> • If your ACO (1) completely and accurately reports and (2) meets minimum attainment (30th percentile) on at least one measure in each domain for the 2013 reporting period, your ACO will be eligible to share in savings under the Pioneer ACO Model for its second performance year. • Your ACO will meet the quality performance standard for the 2013 reporting period if you have completely and accurately reported on all quality measures and if you have achieved minimum attainment on at least 70% of measures in each domain. • If your ACO completely and accurately reports the minimum quality data required for the 2013 reporting period, participating ACO providers will automatically satisfy the PQRS Incentive Program requirements and will receive the PQRS incentive payment in 2014. • Pioneer ACOs will transition all but one remaining measure (ACO-7) to pay for performance for the 2014 reporting year.
What You Can Do	<ul style="list-style-type: none"> • Consider the information in this report to help you identify clinical areas where your ACO is doing well and those areas that may need improvement. • Share your results with your ACO providers so that they can use this information to improve care and assist your ACO to efficiently capture the required data.

Summary Information Under Pay for Performance					
Domain	Complete and Accurate Reporting by Domain	Minimum Attainment by Domain		Points Earned/ Total Possible Points	Domain Score
Patient/Caregiver Experience	Completely and accurately reported on all measures	Met minimum attainment on 7 of 7 (100.00%) measures	Met or exceeded the minimum attainment threshold on 70% of measures in the domain.	12.50/14 points	89.29%
Care Coordination/ Patient Safety	Completely and accurately reported on all measures	Met minimum attainment on 5 of 7 (71.43%) measures	Met or exceeded the minimum attainment threshold on 70% of measures in the domain	6.55/14 points	46.79%
Preventive Health	Completely and accurately reported on all measures	Met minimum attainment on 7 of 8 (87.50%) measures	Met or exceeded the minimum attainment threshold on 70% of measures in the domain.	10.85/16 points	67.81%
At Risk Population	Completely and accurately reported on all measures	Met minimum attainment on 6 of 7 (85.71%) of measures	Met or exceeded the minimum attainment threshold on 70% of measures in the domain.	9.45/14 points	67.50%
ACO Quality Score: 67.85%					
Quality Performance Standard Met: ACO completely reported on 100% of measures ACO achieved minimum attainment on at least 70% of measures in each domain					

Notes

“Minimum Attainment” defined as 30 percent or the 30th percentile of the performance benchmark per §425.502(b)(3) of the 2011 MSSP Final Rule.

The final quality score is calculated using unrounded domain scores. As a result, the average of the four rounded domain scores displayed in the report may not equal the ACO quality score displayed in the report.

ACO Quality Measure Benchmarks

Domain	Measure	Description	Pay-for-Performance Phase In R= Reporting P= Performance			30th perc.	40th perc.	50th perc.	60th perc.	70th perc.	80th perc.	90th perc.
			PY1	PY2	PY3							
						1.1 points	1.25 points	1.4 points	1.55 points	1.70 points	1.85 points	2.00 points
Patient/Caregiver Experience	ACO #1	Getting Timely Care, Appointments, and Information	R	P	P	30.00	40.00	50.00	60.00	70.00	80.00	90.00
Patient/Caregiver Experience	ACO #2	How Well Your Doctors Communicate	R	P	P	30.00	40.00	50.00	60.00	70.00	80.00	90.00
Patient/Caregiver Experience	ACO #3	Patients' Rating of Doctor	R	P	P	30.00	40.00	50.00	60.00	70.00	80.00	90.00
Patient/Caregiver Experience	ACO #4	Access to Specialists	R	P	P	30.00	40.00	50.00	60.00	70.00	80.00	90.00
Patient/Caregiver Experience	ACO #5	Health Promotion and Education	R	P	P	54.71	55.59	56.45	57.63	58.22	59.09	60.71
Patient/Caregiver Experience	ACO #6	Shared Decision Making	R	P	P	72.87	73.37	73.91	74.51	75.25	75.82	76.71
Patient/Caregiver Experience	ACO #7	Health Status/Functional Status	R	R	R	N/A	N/A	N/A	N/A	N/A	N/A	N/A
Care Coordination/Patient Safety	ACO #8	Risk Standardized, All Condition Readmissions	R	R	P	16.62	16.41	16.24	16.08	15.91	15.72	15.45
Care Coordination/Patient Safety	ACO #9	ASC Admissions: COPD or Asthma in Older Adults	R	P	P	1.24	1.02	0.84	0.66	0.52	0.36	0.00
Care Coordination/Patient Safety	ACO #10	ASC Admission: Heart Failure	R	P	P	1.22	1.03	0.88	0.72	0.55	0.40	0.18
Care Coordination/Patient Safety	ACO #11	Percent of PCPs who Qualified for EHR Incentive Payment	R	P	P	51.35	59.70	65.38	70.20	76.15	84.85	90.91
Care Coordination/Patient Safety	ACO #12	Medication Reconciliation	R	P	P	30.00	40.00	50.00	60.00	70.00	80.00	90.00
Care Coordination/Patient Safety	ACO #13	Falls: Screening for Fall Risk	R	P	P	17.12	22.35	27.86	35.55	42.32	51.87	73.38
Preventive Health	ACO #14	Influenza Immunization	R	P	P	29.41	39.04	48.29	58.60	75.93	97.30	100.00
Preventive Health	ACO #15	Pneumococcal Vaccination	R	P	P	23.78	39.94	54.62	70.66	84.55	96.64	100.00
Preventive Health	ACO #16	Adult Weight Screening and Follow-up	R	P	P	40.79	44.73	49.93	66.35	91.34	99.09	100.00
Preventive Health	ACO #17	Tobacco Use Assessment and Cessation Intervention	R	P	P	30.00	40.00	50.00	60.00	70.00	80.00	90.00
Preventive Health	ACO #18	Depression Screening	R	P	P	5.31	10.26	16.84	23.08	31.43	39.97	51.81
Preventive Health	ACO #19	Colorectal Cancer Screening	R	R	P	19.81	33.93	48.49	63.29	78.13	94.73	100.00
Preventive Health	ACO #20	Mammography Screening	R	R	P	28.59	42.86	54.64	65.66	76.43	88.31	99.56
Preventive Health	ACO #21	Proportion of Adults who had blood pressure screened in past 2 years	R	R	P	30.00	40.00	50.00	60.00	70.00	80.00	90.00
At-Risk Population Diabetes	Diabetes Composite ACO #22 – 26	ACO #22. Hemoglobin A1c Control (HbA1c) (<8 percent) ACO #23. Low Density Lipoprotein (LDL) (<100 mg/dL) ACO #24. Blood Pressure (BP) < 140/90 ACO #25. Tobacco Non Use ACO #26. Aspirin Use	R	P	P	17.39	21.20	23.48	25.78	28.17	31.37	36.50
At-Risk Population Diabetes	ACO #27	Percent of beneficiaries with diabetes whose HbA1c in poor control (>9 percent)	R	P	P	70.00	60.00	50.00	40.00	30.00	20.00	10.00
At-Risk Population Hypertension	ACO #28	Percent of beneficiaries with hypertension whose BP < 140/90	R	P	P	60.00	63.16	65.69	68.03	70.89	74.07	79.65
At-Risk Population IVD	ACO #29	Percent of beneficiaries with IVD with complete lipid profile and LDL control < 100mg/dl	R	P	P	35.00	42.86	51.41	57.14	61.60	67.29	78.81
At-Risk Population IVD	ACO #30	Percent of beneficiaries with IVD who use Aspirin or other antithrombotic	R	P	P	45.44	56.88	68.25	78.77	85.00	91.48	97.91
At-Risk Population HF	ACO #31	Beta-Blocker Therapy for LVSD	R	R	P	30.00	40.00	50.00	60.00	70.00	80.00	90.00
At-Risk Population CAD	CAD Composite ACO #32 – 33	ACO #32. Drug Therapy for Lowering LDL Cholesterol ACO #33. ACE Inhibitor or ARB Therapy for Patients with CAD and Diabetes and/or LVSD	R	R	P	54.08	61.44	66.11	69.96	72.32	76.40	79.84

Source: <http://www.cms.gov/Medicare/Medicare-Fee-for-Service-Payment/sharedsavingsprogram/Downloads/MSSP-QM-Benchmarks.pdf>

Measure		P078			2013 Performance Summary Statistics (All ACOs)*				
		Number of Surveys Completed	Your ACO Performance Rate	Points Earned/ Total Possible Points †	Mean Performance Rate	Median Performance Rate	30 th Percentile Performance Rate	90 th Percentile Performance Rate	
Domain: Patient/Caregiver Experience¹									
P	Getting Timely Care, Appointments, and Information (ACO-1)	302	78.05	1.70/2	81.48	81.54	79.53	85.23	
P	How Well Your Doctors Communicate (ACO-2)		92.28	2.00/2	92.96	93.13	92.33	94.61	
P	Patients' Rating of Doctor (ACO-3)		93.04	2.00/2	92.06	92.18	91.46	93.66	
P	Access to Specialists (ACO-4)		84.29	1.85/2	85.12	85.27	84.3	87.78	
P	Health Promotion and Education (ACO-5)		58.03	1.55/2	58.38	58.14	56.27	62.92	
P	Shared Decision Making (ACO-6)		74.19	1.40/2	74.53	74.40	73.45	77.16	
R	Health Status/Functional Status (ACO-7)		67.15	2.00/2	71.12	71.09	69.97	73.51	
Points Earned in Domain:				12.50/14					
Measure		Denominator	Numerator	Your ACO Performance Rate	Points Earned/ Total Possible Points	Mean Performance Rate	Median Performance Rate	30 th Percentile Performance Rate	90 th Percentile Performance Rate
Domain: Care Coordination/Patient Safety²									
R	Risk Standardized, All Condition Readmissions ³ (ACO-8)	--	--	15.64	2.00/2	14.90	14.85	15.23	14.01
P	ASC Admissions: COPD or Asthma in Older Adults ⁴ (ACO-9)	0.06	0.07	1.12	1.10/2	1.17	1.12	1.32	0.73
P	ASC Admission: HF ⁵ (ACO-10)	0.16	0.16	1.03	1.25/2	1.20	1.19	1.31	0.92
P	Percent of PCPs who Qualified for EHR Incentive Payment (ACO-11)	742	317	42.72%	0.00/4	66.21%	69.79%	57.55%	89.39%
P	Medication Reconciliation (ACO-12)	351	110	31.34%	1.10/2	74.05%	83.69%	66.42%	99.43%
P	Falls: Screening for Fall Risk (ACO-13)	542	97	17.90%	1.10/2	39.99%	38.45%	22.74%	72.68%
Points Earned in Domain:					6.55/14				

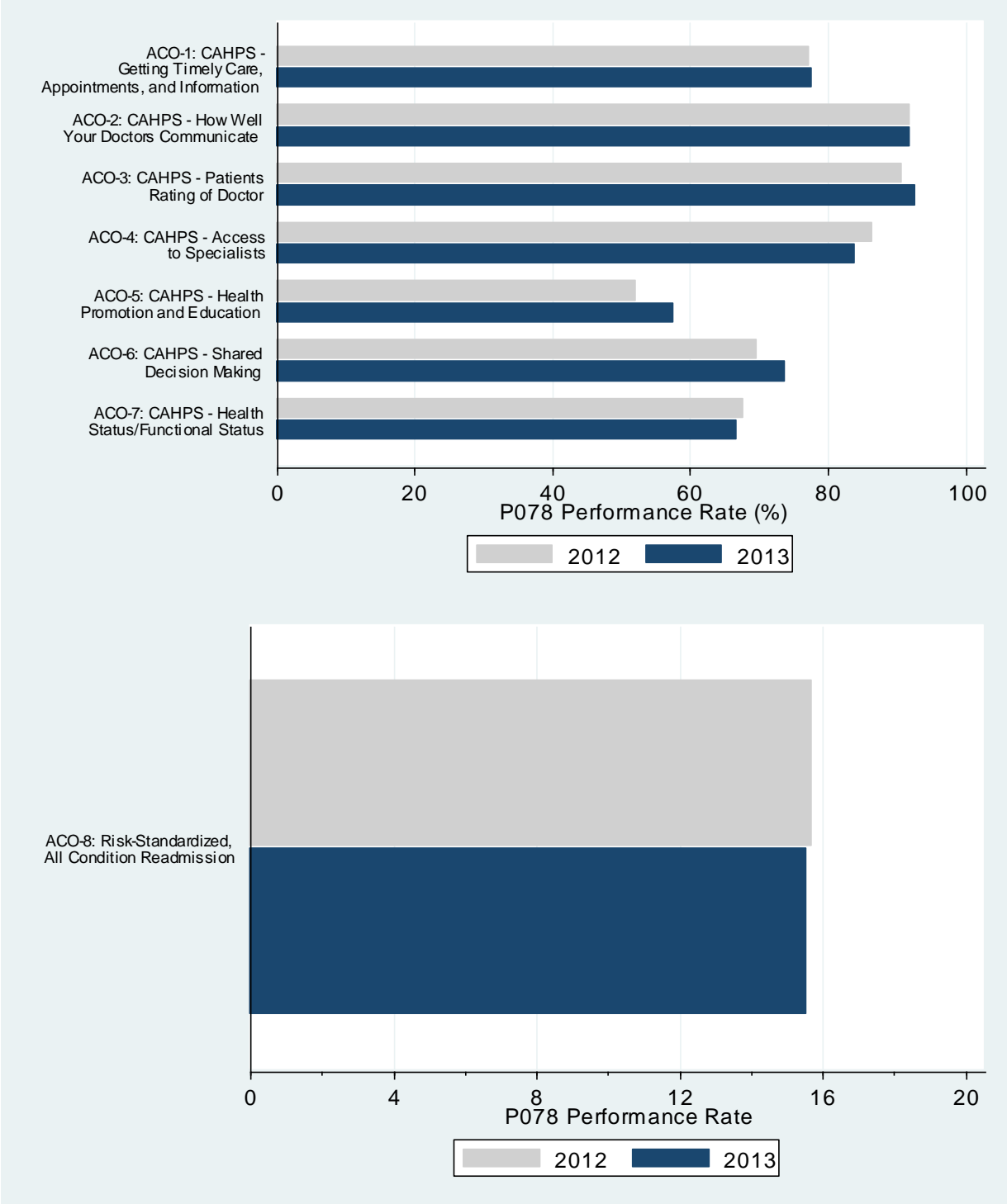
* Please note that these are not benchmarks, but rather summary statistics of all ACOs' CY2013 performance.

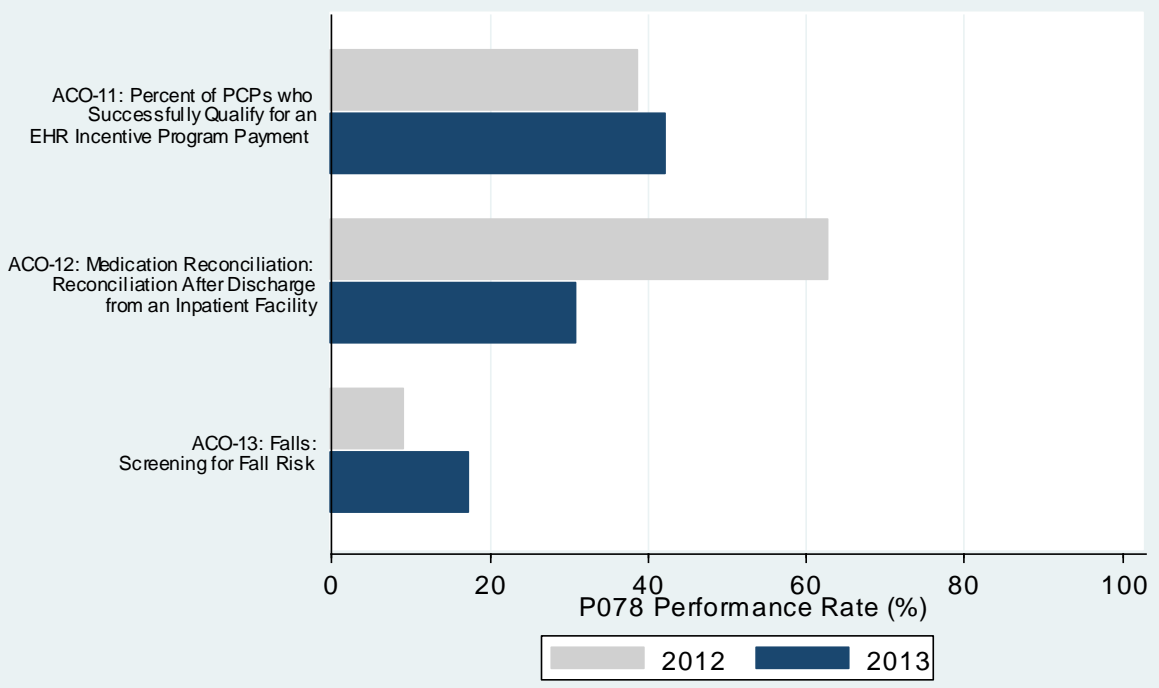
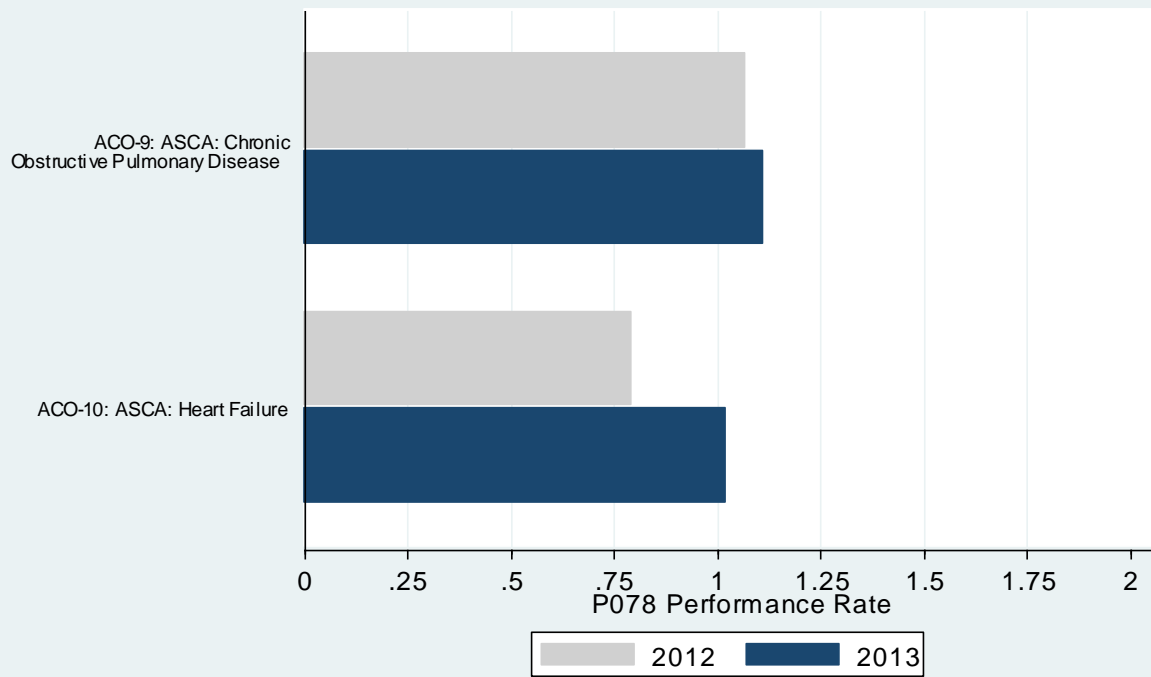
† Points are calculated based on the ACO's performance compared to the quality measure benchmarks displayed on Page 3.

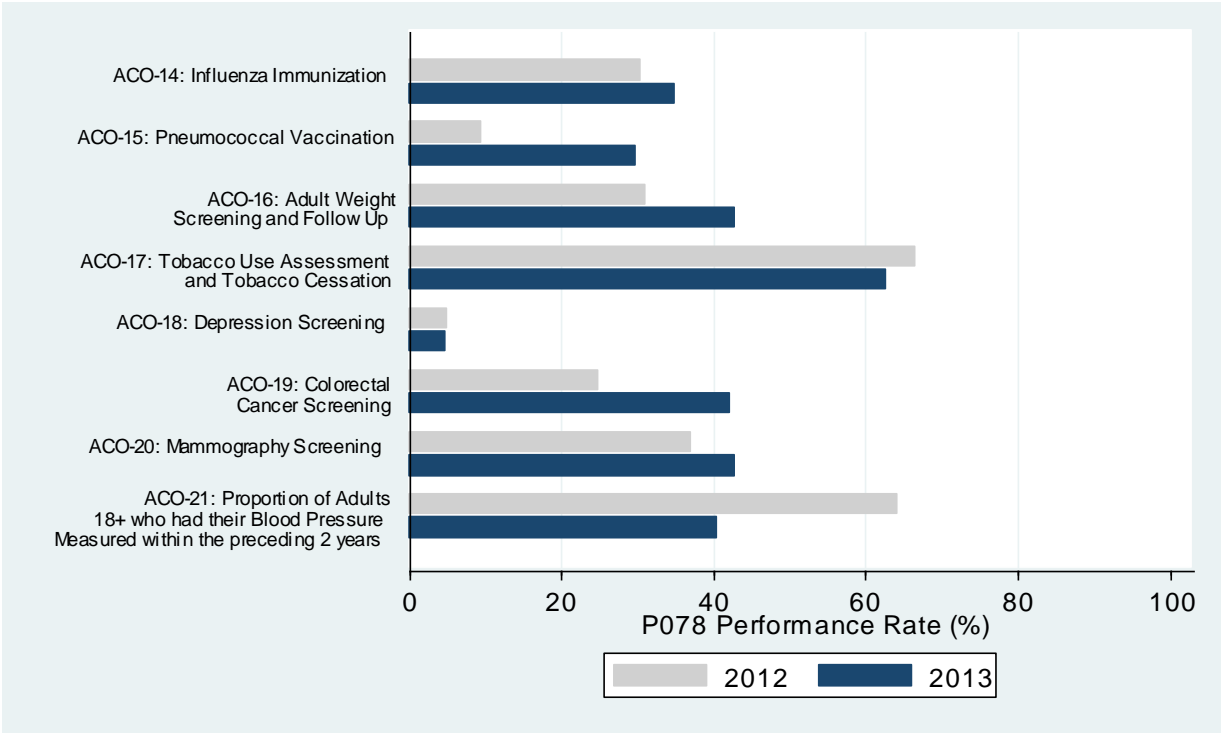
Measure	P078				2013 Performance Summary Statistics (All ACOs)*				
	Denominator	Numerator	Your ACO Performance Rate	Points Earned/ Total Possible Points	Mean Performance Rate	Median Performance Rate	30 th Percentile Performance Rate	90 th Percentile Performance Rate	
Domain: Preventive Health									
P	Influenza Immunization (ACO-14)	548	194	35.40%	1.10/2	57.28%	58.52%	49.26%	76.78%
P	Pneumococcal Vaccination (ACO-15)	547	165	30.16%	1.10/2	55.64%	56.06%	46.00%	82.18%
P	Adult Weight Screening and Follow-up (ACO-16)	544	235	43.20%	1.10/2	62.29%	63.18%	52.99%	83.99%
P	Tobacco Use Assessment and Cessation Intervention (ACO-17)	558	352	63.08%	1.55/2	84.77%	89.49%	83.72%	97.39%
P	Depression Screening (ACO-18)	504	26	5.16%	0.00/2	31.81%	28.51%	12.78%	67.99%
R	Colorectal Cancer Screening (ACO-19)	555	236	42.52%	2.00/2	60.21%	60.93%	54.41%	77.51%
R	Mammography Screening (ACO-20)	559	242	43.29%	2.00/2	62.31%	63.83%	56.09%	77.69%
R	Proportion of Adults who had blood pressure screened in past 2 years (ACO-21)	472	193	40.89%	2.00/2	74.55%	83.61%	61.20%	98.53%
Points Earned in Domain:					10.85/16				
Domain: At Risk Population									
Subdomain: Diabetes									
P	Beneficiaries with diabetes who met of all the following criteria:	446	54	12.11%	0.00/2	22.57%	24.47%	17.07%	38.13%
	Hemoglobin A1c Control (HbA1c) (<8 percent) (ACO-22)	446	246	55.16%	--	68.87%	71.63%	65.20%	80.67%
	Low Density Lipoprotein (LDL) (< 100 mg/dL) (ACO-23)	446	189	42.38%	--	55.23%	56.91%	51.78%	67.55%
	Blood Pressure (BP) < 140/90 (ACO-24)	446	309	69.28%	--	70.23%	71.61%	67.55%	79.55%
	Tobacco Non-Use (ACO-25)	446	266	59.64%	--	64.03%	76.74%	60.56%	87.29%
	Aspirin Use (ACO-26)	136	86	63.24%	--	75.96%	80.07%	71.11%	93.26%
P	Percent of beneficiaries with diabetes whose HbA1c in poor control (>9 percent) (ACO-27)	446	163	36.55%	1.55/2	22.13%	18.75%	25.24%	10.34%

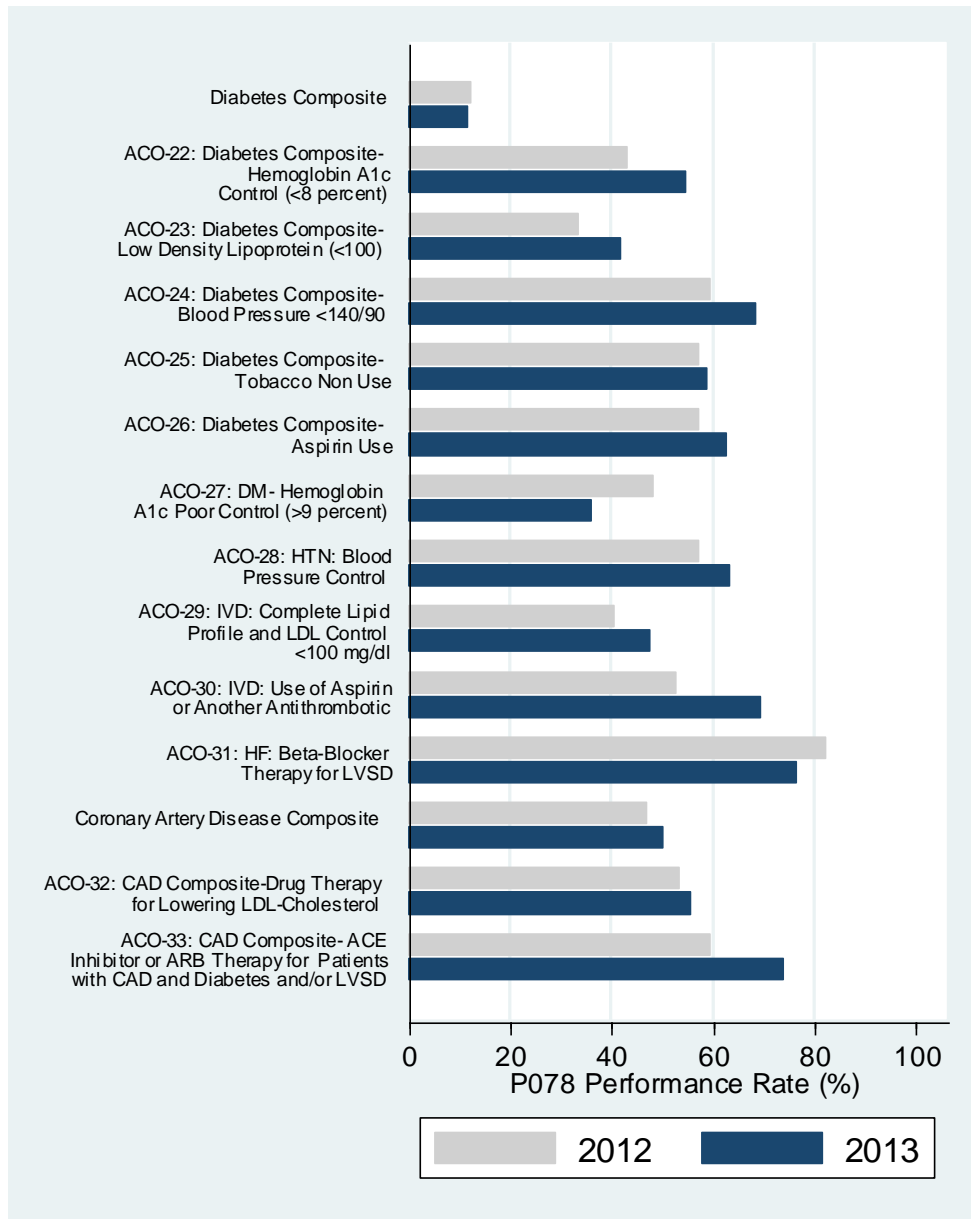
Measure	P078				2013 Performance Summary Statistics (All ACOs)*				
	Denominator	Numerator	Your ACO Performance Rate	Points Earned/ Total Possible Points	Mean Performance Rate	Median Performance Rate	30 th Percentile Performance Rate	90 th Percentile Performance Rate	
Subdomain: Hypertension									
P	Percent of beneficiaries with hypertension whose BP < 140/90 (ACO-28)	513	328	63.94%	1.25/2	68.47%	68.95%	66.12%	78.90%
Subdomain: Ischemic Vascular Disease									
P	Percent of beneficiaries with IVD with complete lipid profile and LDL control < 100mg/dl (ACO-29)	396	191	48.23%	1.25/2	55.85%	58.14%	51.57%	69.93%
P	Percent of beneficiaries who use Aspirin or other antithrombotic (ACO-30)	396	278	70.20%	1.40/2	77.27%	82.14%	74.21%	92.09%
Subdomain: Heart Failure									
R	Beta-Blocker Therapy for LVSD (ACO-31)	88	68	77.27%	2.00/2	80.79%	85.86%	80.00%	95.65%
Subdomain: Coronary Artery Disease									
R	Percent of beneficiaries with CAD who met all of the following criteria:	438	223	50.91%	2.00/2	63.63%	66.39%	57.38%	80.81%
	Drug Therapy for Lowering LDL-Cholesterol (ACO-32)	436	245	56.19%	--	72.26%	75.76%	67.45%	88.53%
	(ACE) Inhibitor or (ARB) Therapy for Patients with CAD and Diabetes and/or (LVSD) (ACO-33)	197	147	74.62%	--	69.92%	72.13%	66.00%	86.43%
Points Earned in Domain:					9.45/14				

P078 Performance 2012-2013









¹ Performance rates for ACO-1 through ACO-7 account for sampling weights.

² For ACO-8, ACO-9, ACO-10, and ACO-27, a lower performance rate indicates better performance.

³ The measure reports a single summary Risk Standardized Readmission Rate, derived from the volume-weighted results of five different models, one for each of the following specialty cohorts (groups of discharge condition categories or procedure categories): surgery/gynecology, general medicine, cardiorespiratory, cardiovascular, and neurology.

⁴ As a reminder, ACO-9 and ACO-10 are expressed as a ratio of observed over expected rate. Hence, a ratio >1.00 indicates the ACO has higher than expected admission rate, thus poorer quality